



**We make decisions
& choices everyday**



**We make decisions
& choices everyday**



Games?



Food?



Clothing?



**Most of the time, we
don't think about these
decisions very much**





**But there are times
where we need to
think a little harder
about the choices we
make**

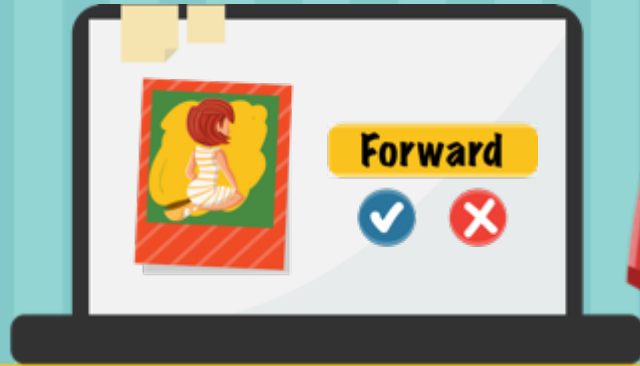


**But there are times
where we need to
think a little harder
about the choices we
make**

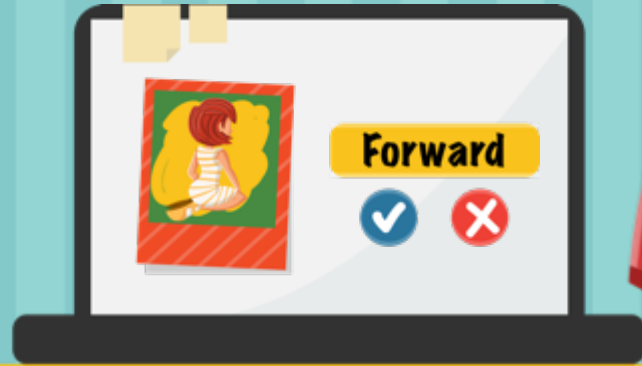
**Particularly when
it comes to using
technology**

Think about
this situation...

Someone asks you
to forward a hurtful
comment about another
student, to all your friends



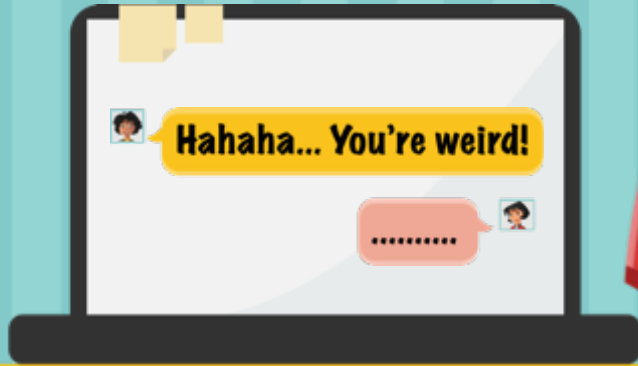
Think about
this situation...



Someone asks you
to forward a hurtful
comment about another
student, to all your friends

Keep the answer in your
head – but what would you
do – forward it or not
forward it?

**With this
situation...**



If you received this
message would you tell
someone if the comment
upset you?

Yes

No

Poll question



What would help you to report cyberbullying if it was happening to you?

a

If I knew and trusted someone who could help

b

If a friend offered support

c

If I knew where to report cyberbullying on a site



At times there are factors that can stop you from making the right decision

Put yourself in the shoes of Tom...

Tom, don't invite
John to play the
game at lunchtime!

John



Sally



Tom



*What choices
do you have?*



Tom



That's not very
fair or kind.

Tom

Good choice



Tom

Good choice

That's not
very fair!

John is very
kind to
everyone.



Tom

Good choice

That's not
very fair!

John is very kind
to everyone.

Why does she
want me to be
mean to John?



What might prevent you making a good decision in this situation?

John



Tom, don't invite John to play the game at lunchtime!

Sally



Tom



Tom

Not wanting
confrontation

Not thinking
it through

Not wanting to
lose friends

Not thinking
about how it may
make the other
person feel



When you are stuck between...

Good
decision



Poor
decision



Remember



T.E.C





THINK

of all your
options

. E . C





THINK

of all your
options



EVALUATE

these
options



C





THINK

of all your
options



EVALUATE

these
options



CHOOSE

the best outcome
for yourself and the
people involved



Scenario 2

online
game



Tom, I played a fun online game over the weekend and I started chatting to another player

Tom



Sally



Do you
know him?

Tom



Sally



No, but he sounded
very cool, so I agreed
to continue the
conversation on Skype.

Tom



Sally



At first, we were talking about the game, but he started asking me personal questions.

Tom



Sally



Like what?

Tom

Sally



Like, if I have a mobile and what school I went to. He also wanted me to send a photo of myself.

Tom



Sally



Tom



What is the
best advice?





T.E.C.

Tom





THINK

of all your options.
What can you do?

EVALUATE

these options.
What will happen if
you choose to follow
a particular option?

CHOOSE

the best outcome
for your friend.

Tom



Options include:

Poor
choice



Tell the friend to
share the
information being
asked

Good
choice



Stop communicating
with the person



Take screenshots,
collect evidence and
tell an adult

Scenario 3







Snapagram



Many Faces of Lynn

915
posts

1290
followers

821
following

@John891: She is very
weird! Why did she ever
come to our school?

#UglyFacesofLynn



What should
I do?





THINK

of all your options.
What can you do?

EVALUATE

these options.
What will happen if
you choose to follow
a particular option?

CHOOSE

the best outcome
for your friend.



Options include:

Poor
choice



Follow it

Good
choice



Not follow
the link



Ask Lynn if
she is OK or
needs help



Report it to
an adult



Things to remember
about making
choices online

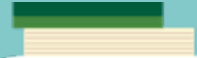
FUN TUBE

Title:

Jamie (The Big Baby) &
The "Pink" Ice Cream

Progress:

UPLOADING...




**The choices you make
not only affect you, they
can affect others**

Good
decision



Poor
decision





Sorry, John!

**Sometimes we may make
poor choices and that is okay.
It is important to learn from
our previous mistakes**

**When you are unsure
if the choice you are
making is the best
one, it is a good idea
to run it by a trusted
adult first**



Mr. Nolan, I need
some advice on...



**When you are unsure
if the choice you are
making is the best
one, it is a good idea
to run it by a trusted
adult first**



Poll question

**Choose the adult you
would most likely trust
to ask for help:**

a

Mum, Dad or
Carer

b

Sister, Brother,
Aunty, Uncle

c

Teacher

d

Other

your choices can:

Affect things
in the future



your choices can:

Affect things
in the future

Have a ripple effect and can impact
family, friends and the school



your choices can:

Affect things
in the future

Have a ripple effect and can impact
family, friends and the school

Define what other
people think of you







esafety.gov.au